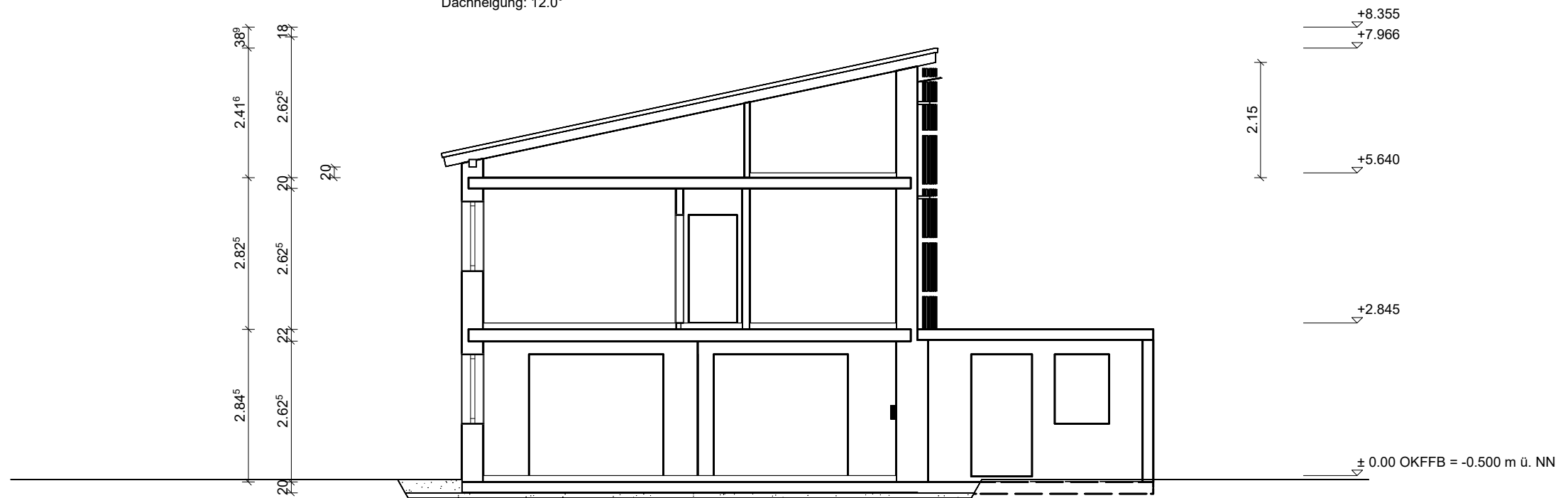


Dachkonstruktion lt. Statik

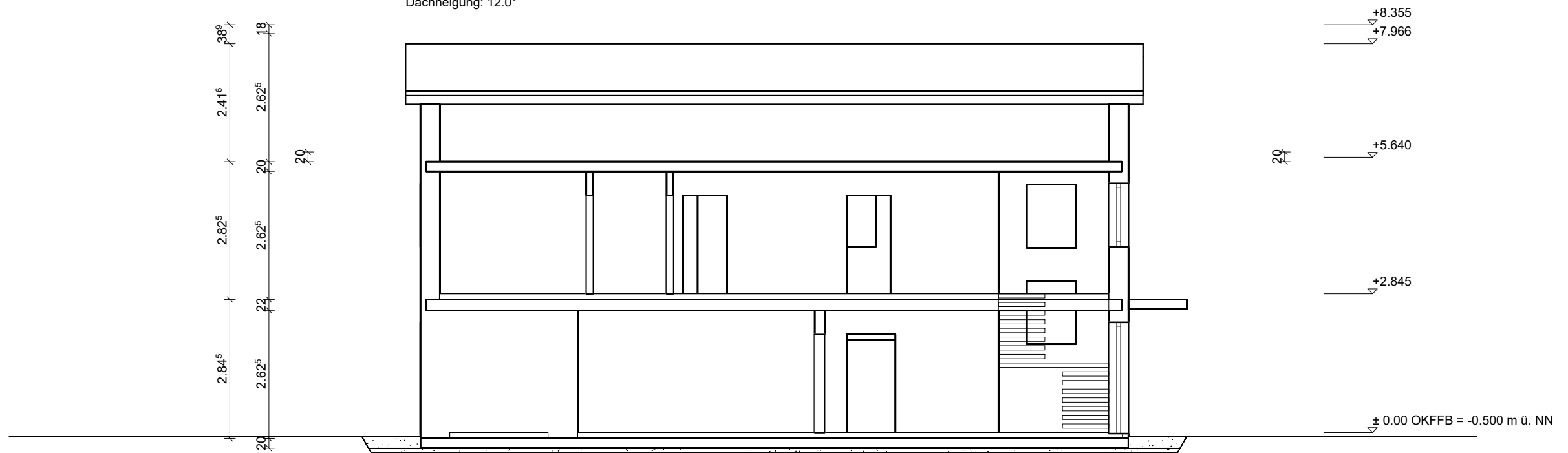
Dachneigung: 12.0°



Bodenplatte C 25/30 d=25cm
Filterschicht 0/60 d=10cm

Dachkonstruktion lt. Statik

Dachneigung: 12.0°



Bodenplatte C 25/30 d=25cm
Filterschicht 0/60 d=10cm

