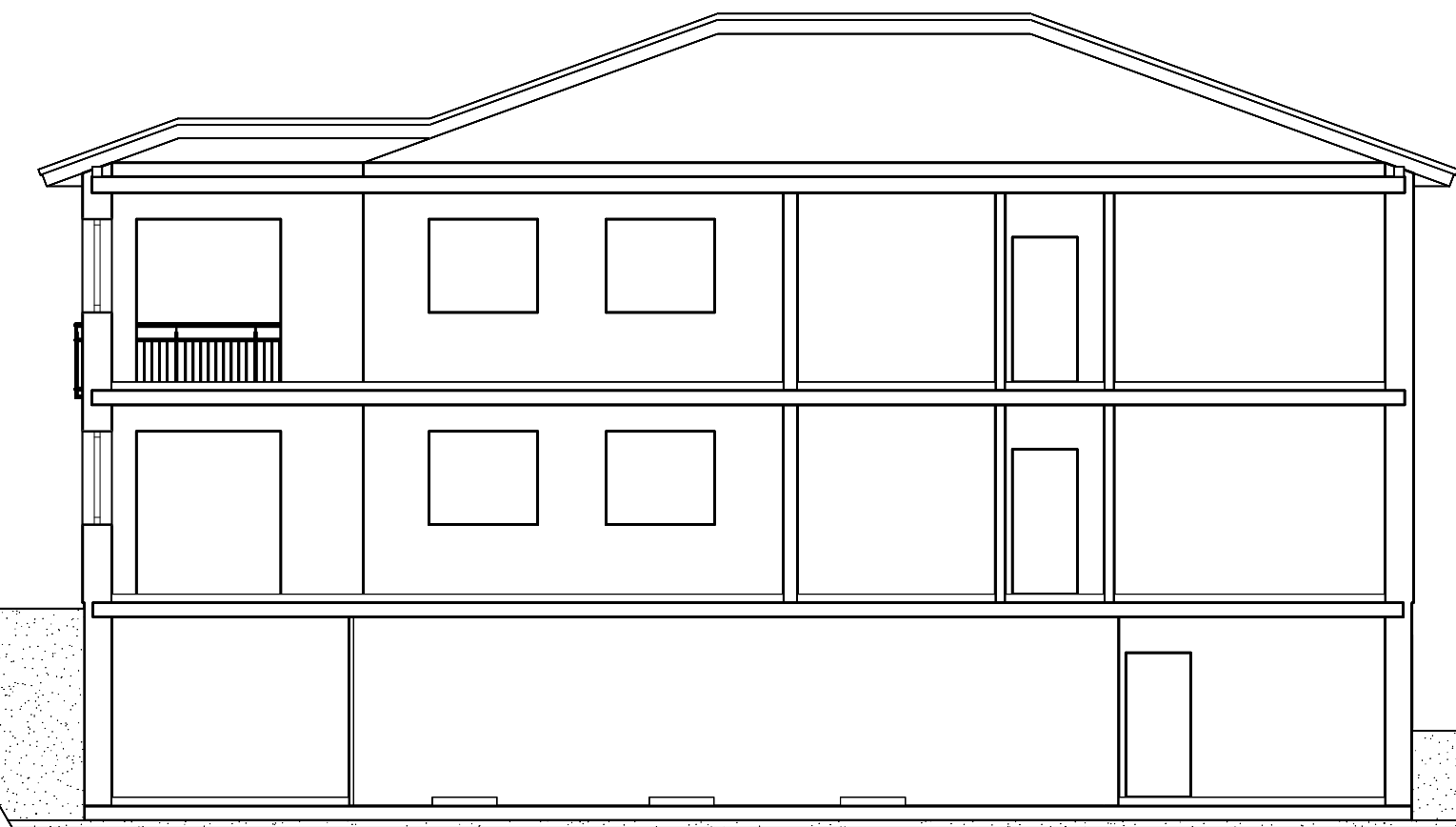
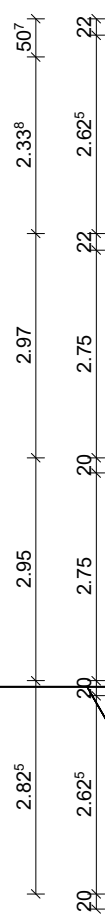


Dachkonstruktion lt. Statik

Dachneigung: 20.0°



+8.645
+8.138

+2.950

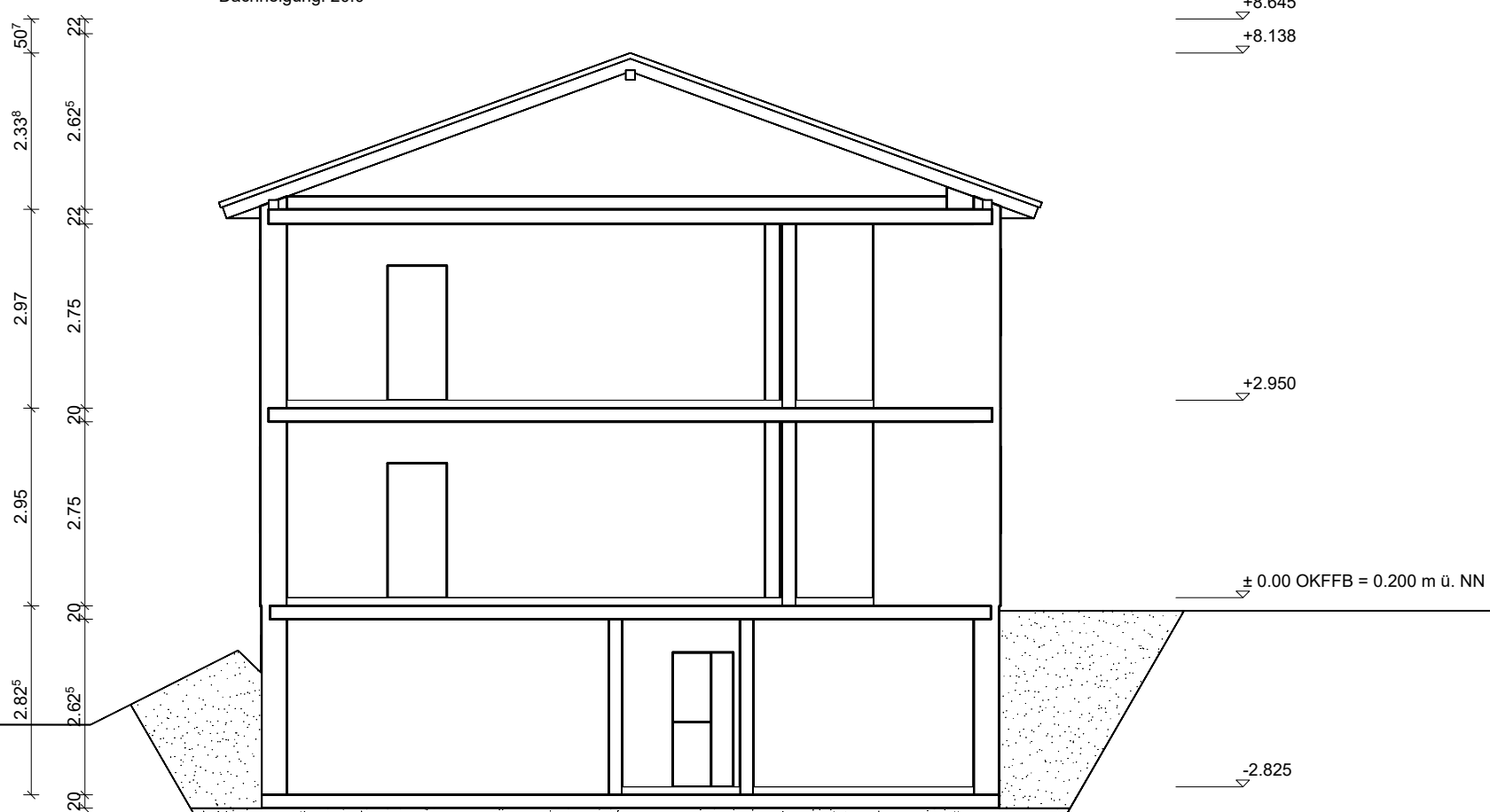
± 0.00 OKFFB = 0

-2.825

Bodenplatte C 25/30 d=25cm
Filterschicht 0/60 d=10cm

Dachkonstruktion lt. Statik

Dachneigung: 20.0°



Bodenplatte C 25/30 d=25cm
Filterschicht 0/60 d=10cm







