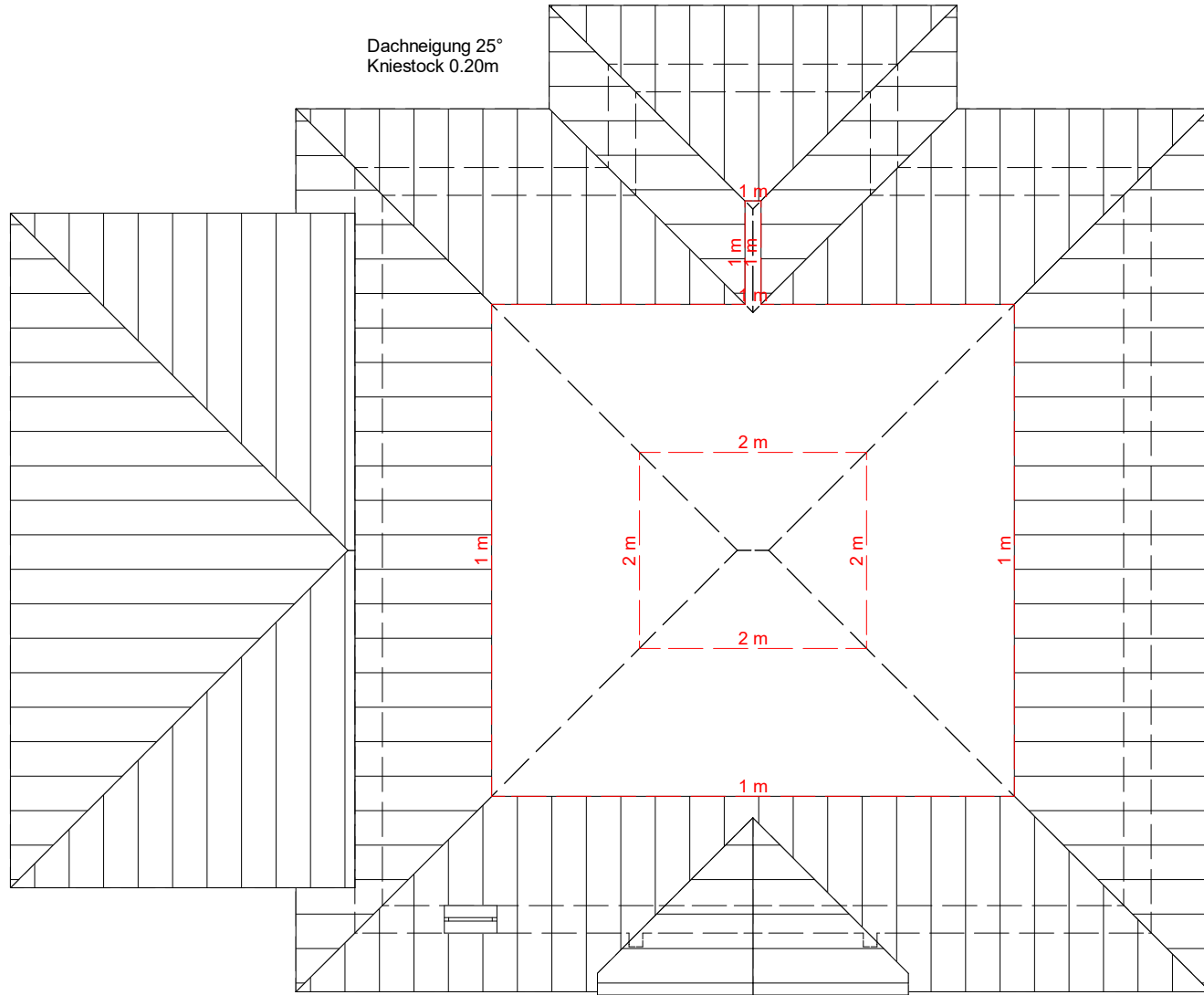
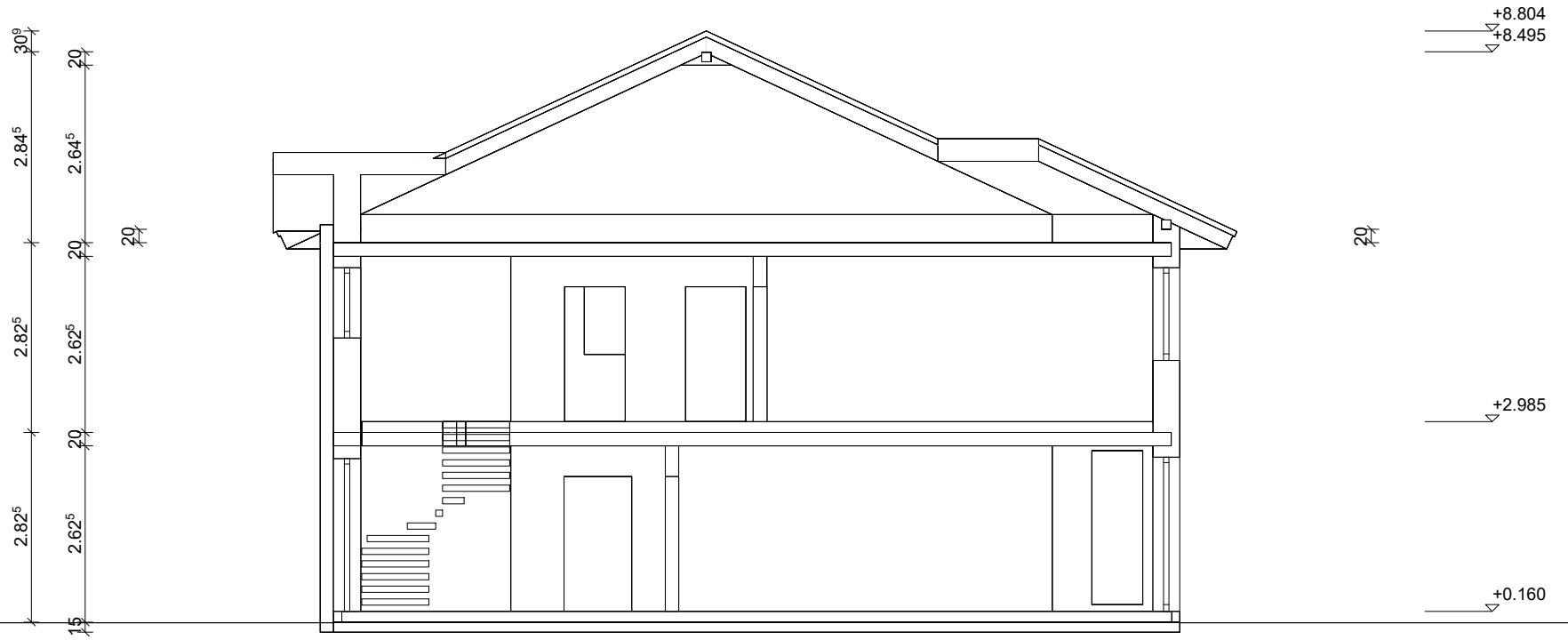


Dachneigung 25°
Kniestock 0.20m



Dachkonstruktion lt. Statik

Dachneigung: 25.0°

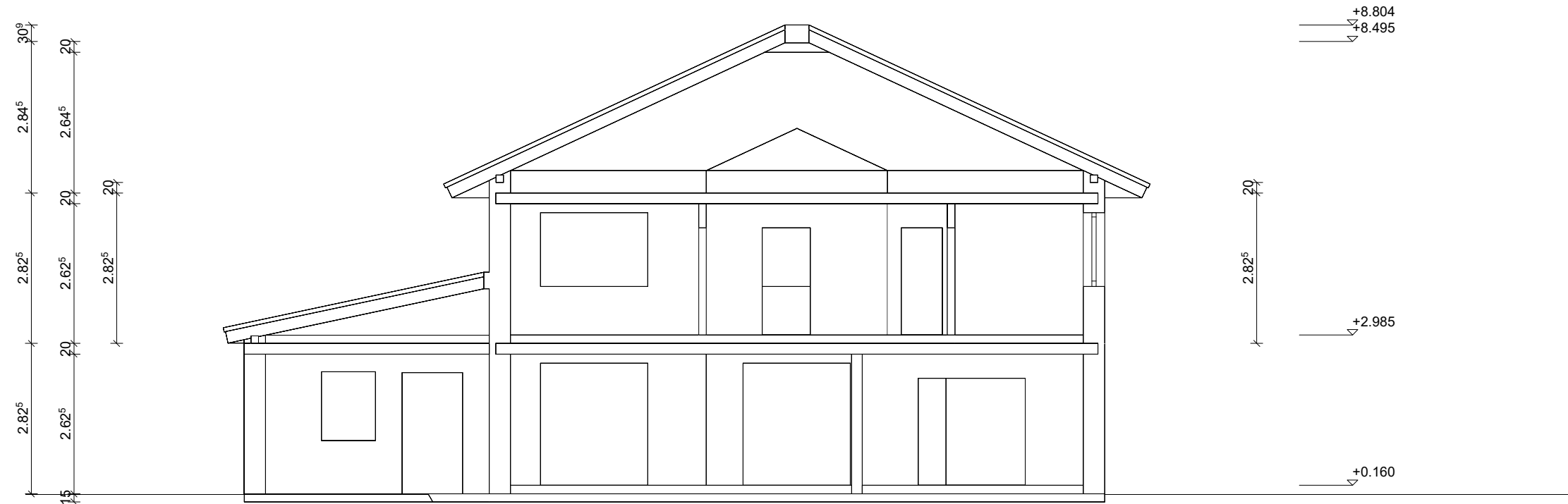


Bodenplatte C 25/30 d=25cm

Filterschicht 0/60 d=10cm

Dachkonstruktion lt. Statik

Dachneigung: 25.0°



Bodenplatte C 25/30 d=25cm

Filterschicht 0/60 d=10cm

