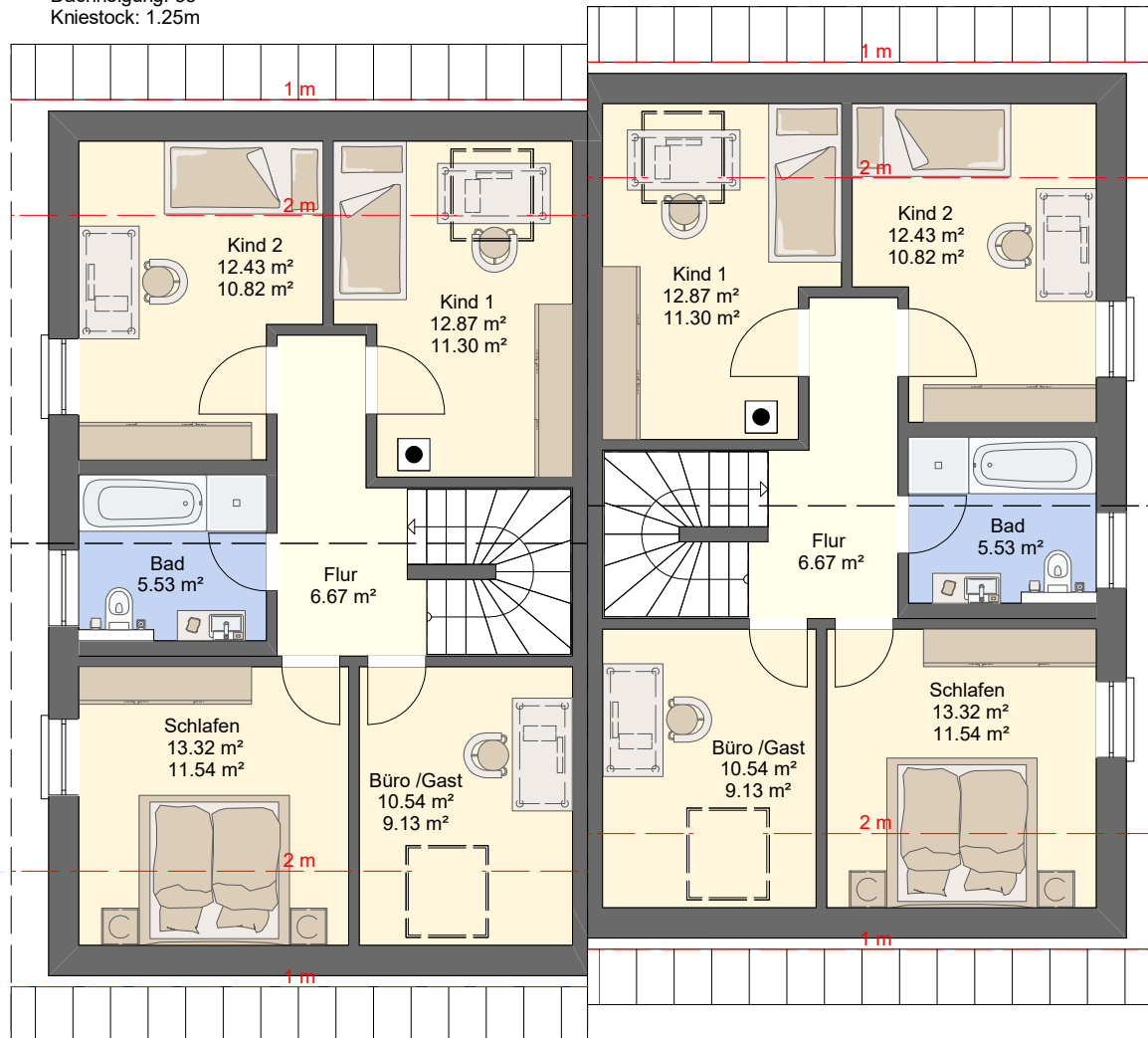
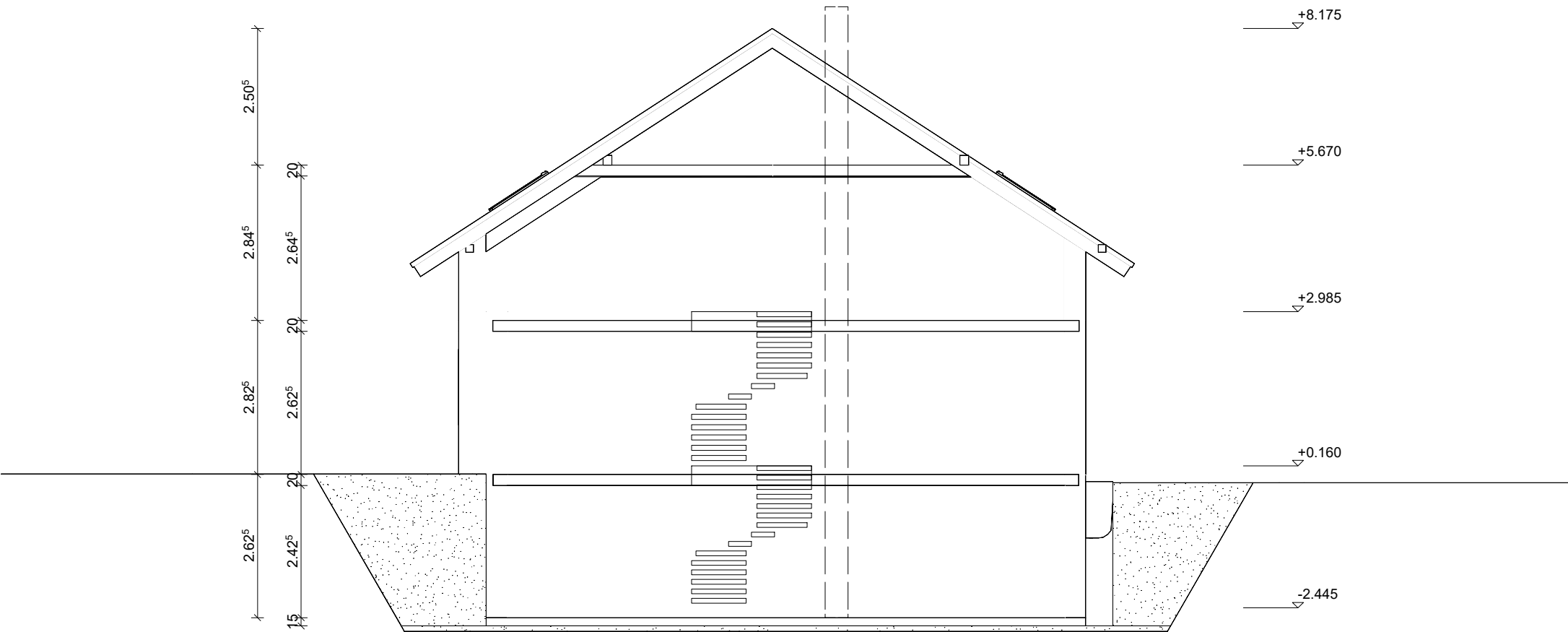


Dachneigung: 33°
Kniestock: 1.25m



Dachkonstruktion lt. Statik

Dachneigung Nord: 33.0°

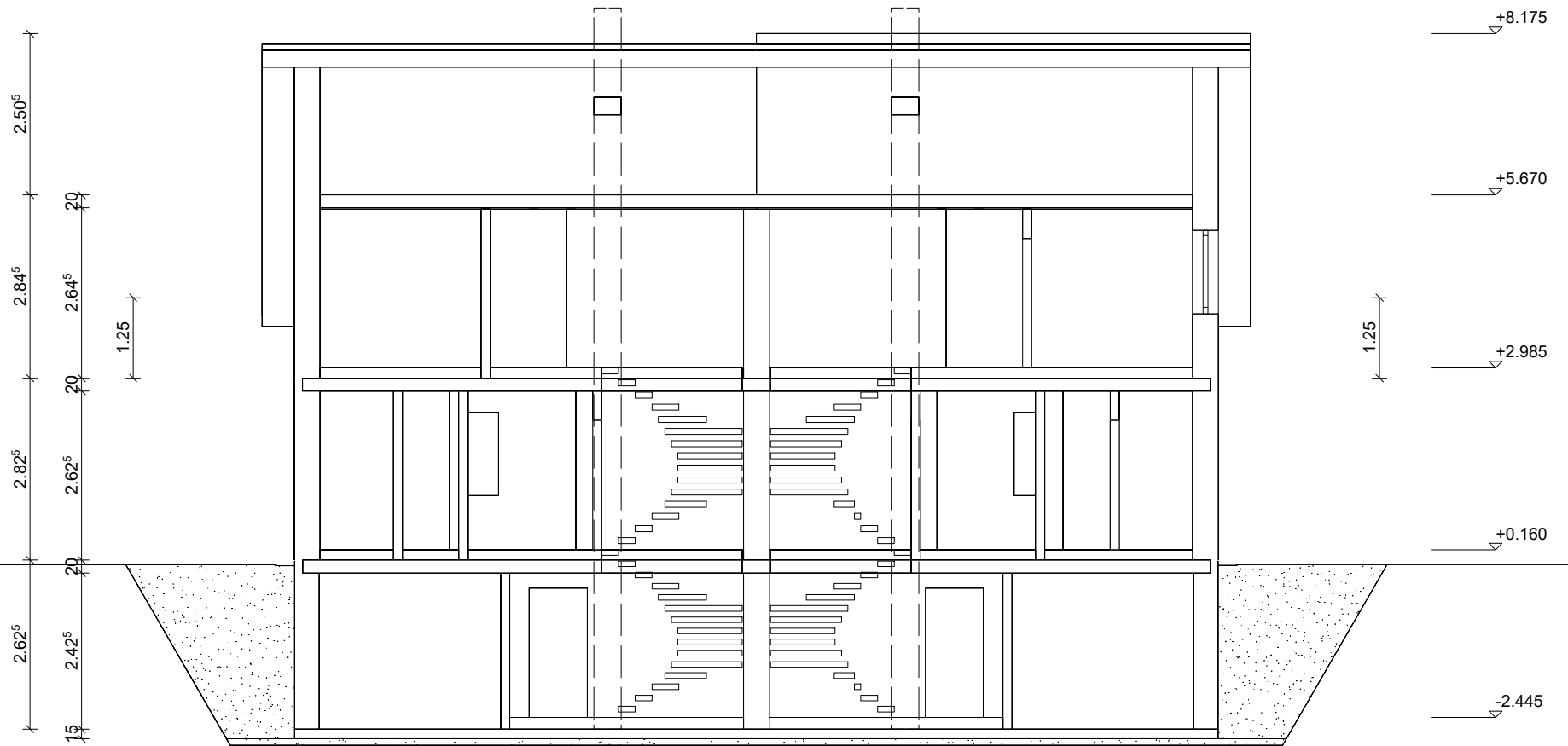


Bodenplatte C 25/30 d=25cm

Filterschicht 0/60 d=10cm

Dachkonstruktion lt. Statik

Dachneigung Nord: 33.0°



Bodenplatte C 25/30 d=25cm

Filterschicht 0/60 d=10cm

