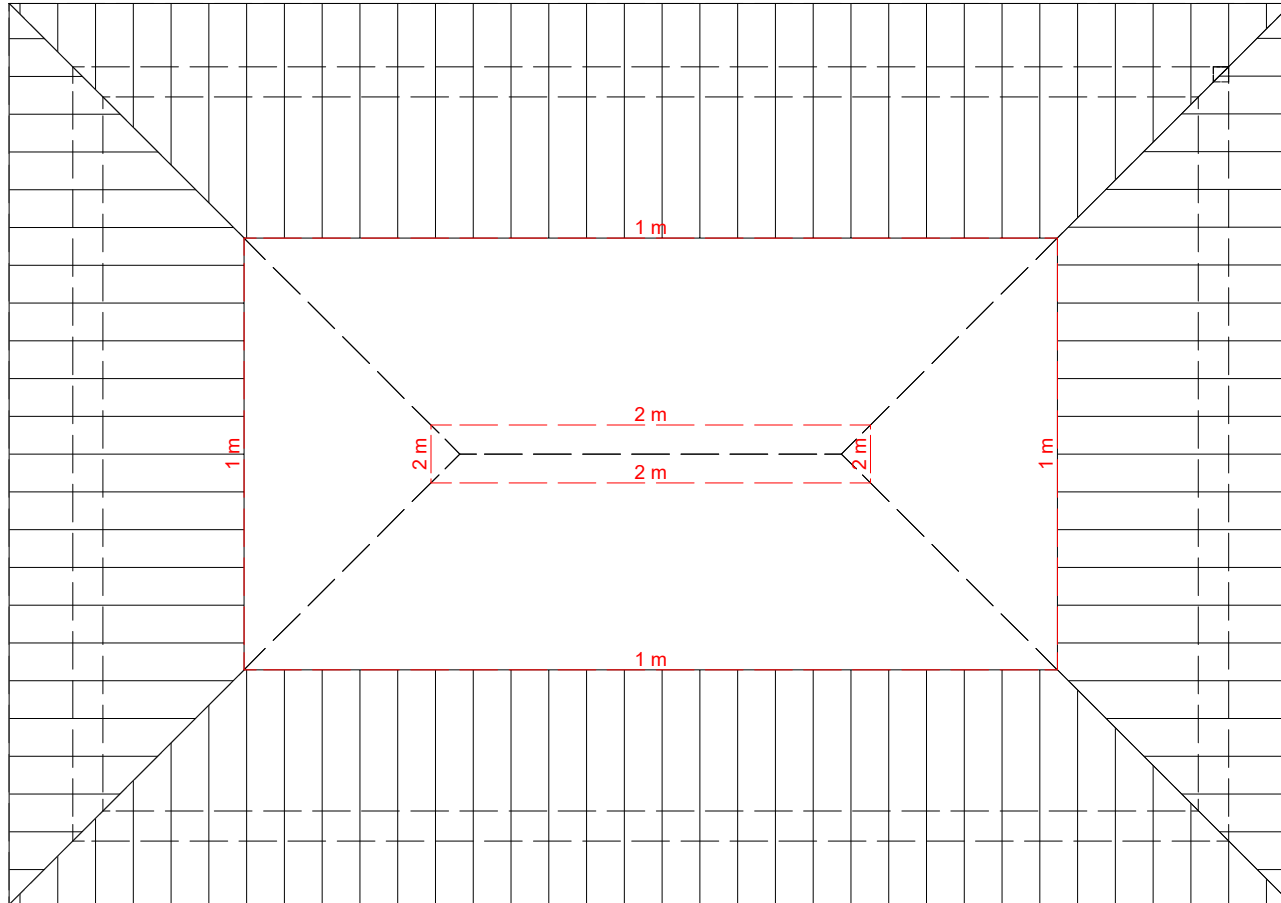
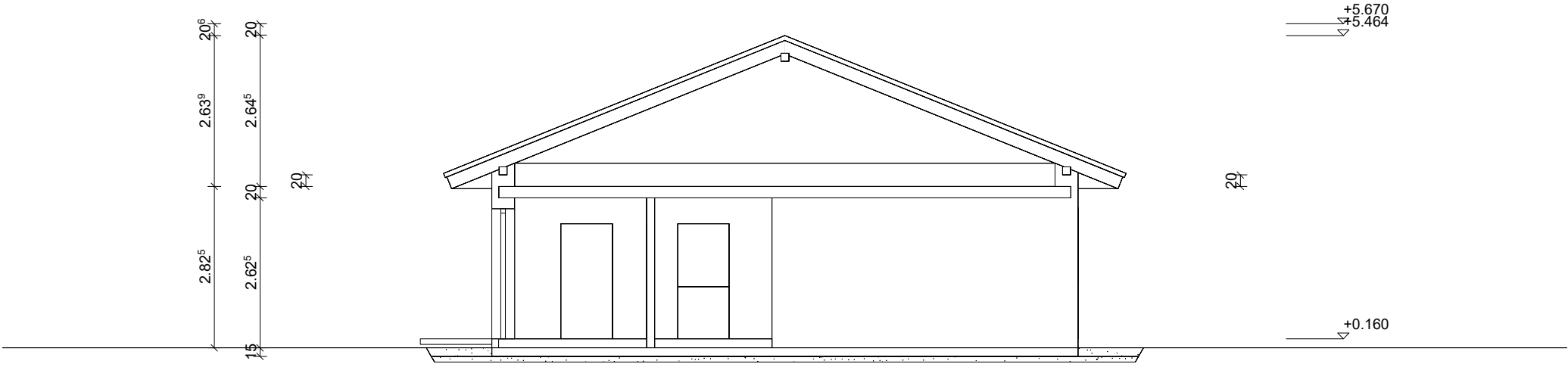


DN 22°
Kniestock 0.20m



Dachkonstruktion lt. Statik

Dachneigung: 22.0°

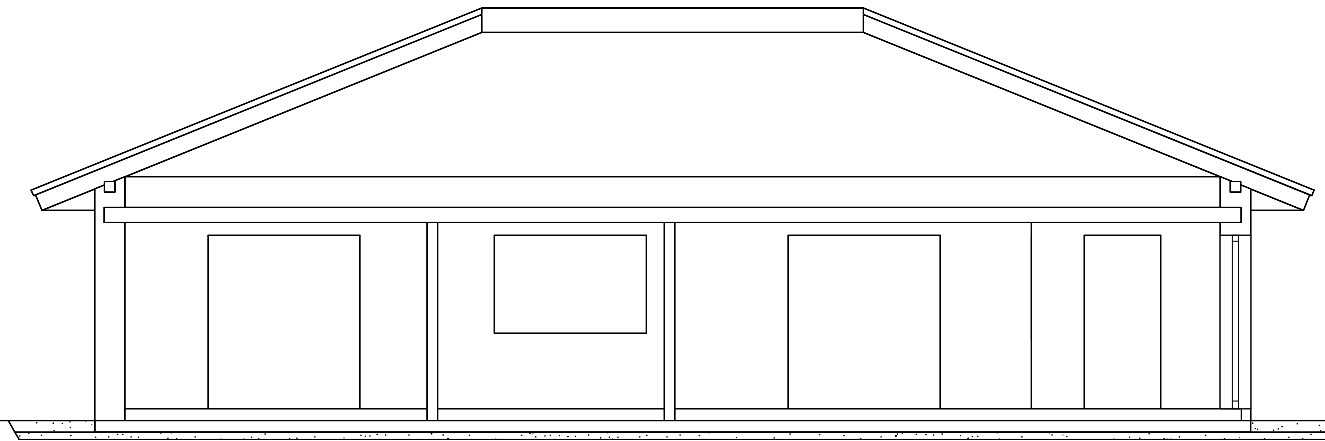
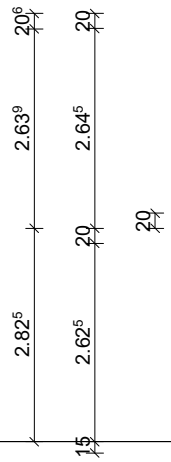


Bodenplatte C 25/30 d=25cm

Filterschicht 0/60 d=10cm

Dachkonstruktion lt. Statik

Dachneigung: 22.0°



+5.670
+5.464

20

+0.160

Bodenplatte C 25/30 d=25cm

Filterschicht 0/60 d=10cm

