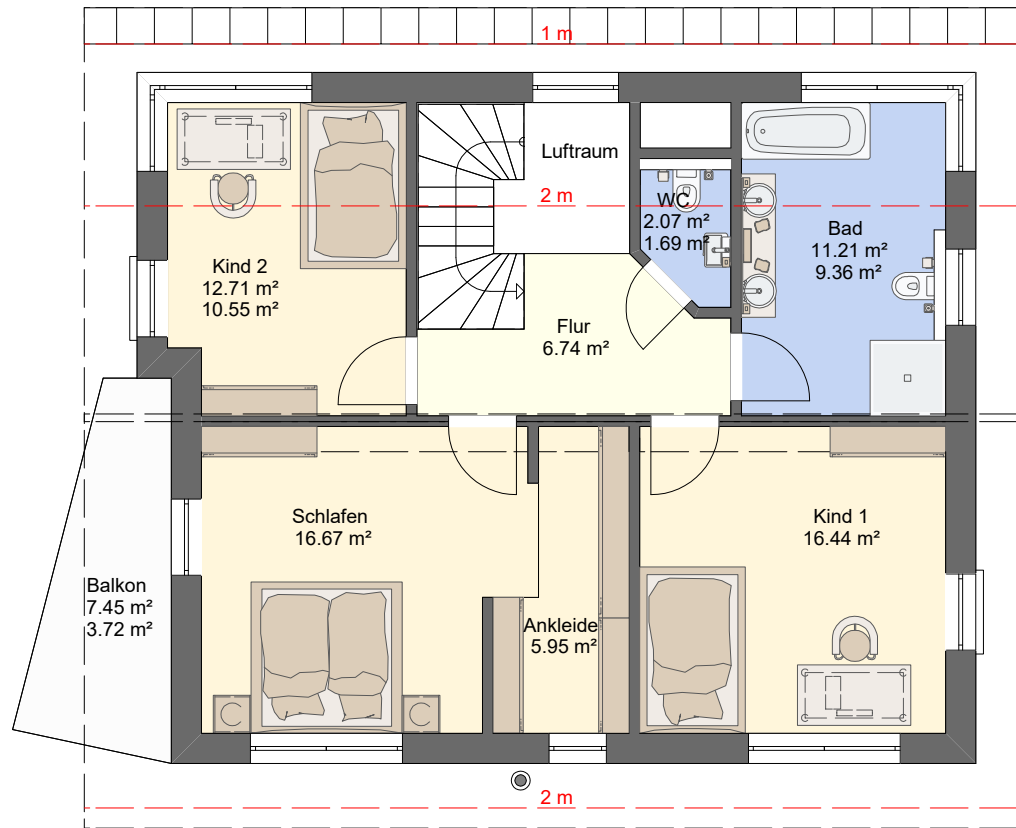


Dachneigung: 25°
Kniestock 1.30m / 2.40m



Dachkonstruktion lt. Statik

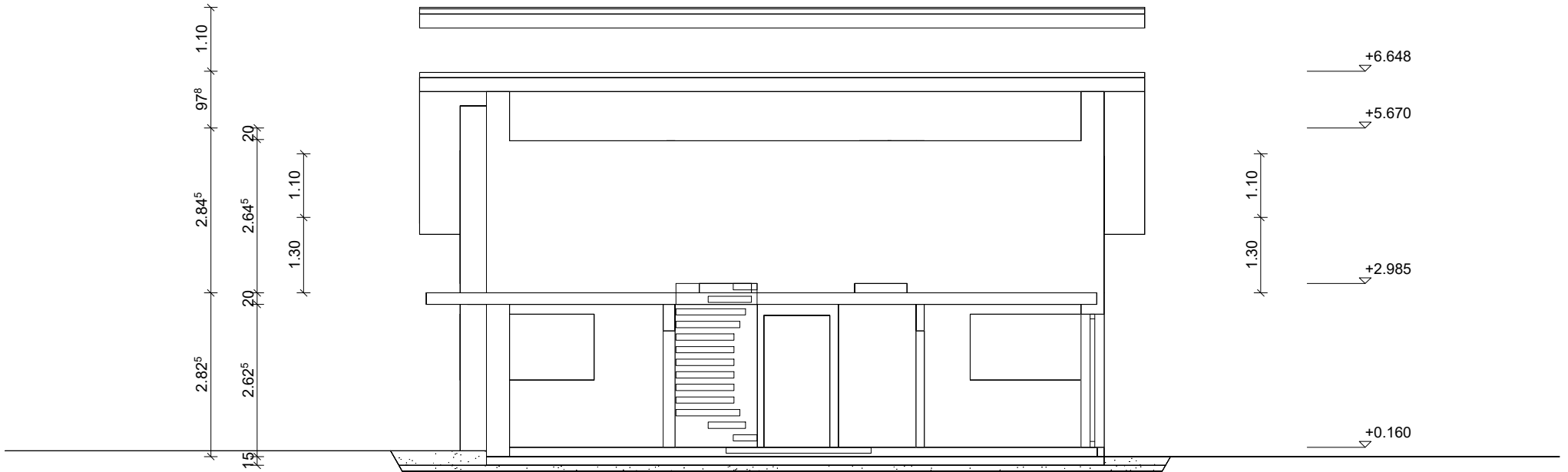
Dachneigung Nord: 25.0°



Bodenplatte C 25/30 d=25cm
Filterschicht 0/60 d=10cm

Dachkonstruktion lt. Statik

Dachneigung Nord: 25.0°



Bodenplatte C 25/30 d=25cm

Filterschicht 0/60 d=10cm

